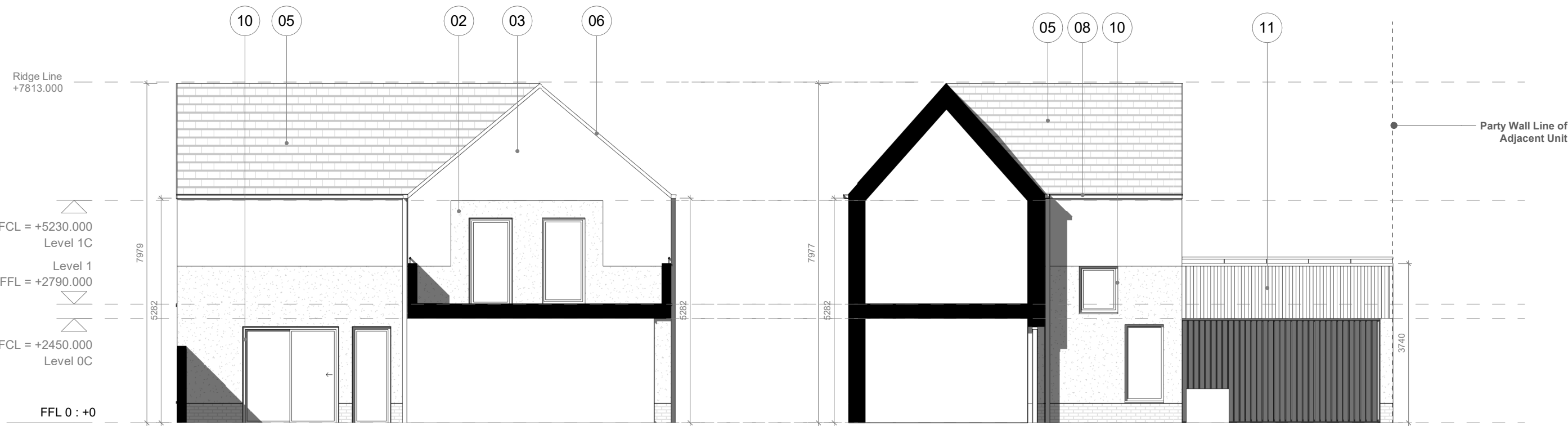




Courtyard House 3b5p\_Front Elevation\_V1c Handed

Courtyard House 3b5p\_External Rear Elevation\_V1c Handed



Courtyard House 3b5p\_Side Elevation\_V1c Handed

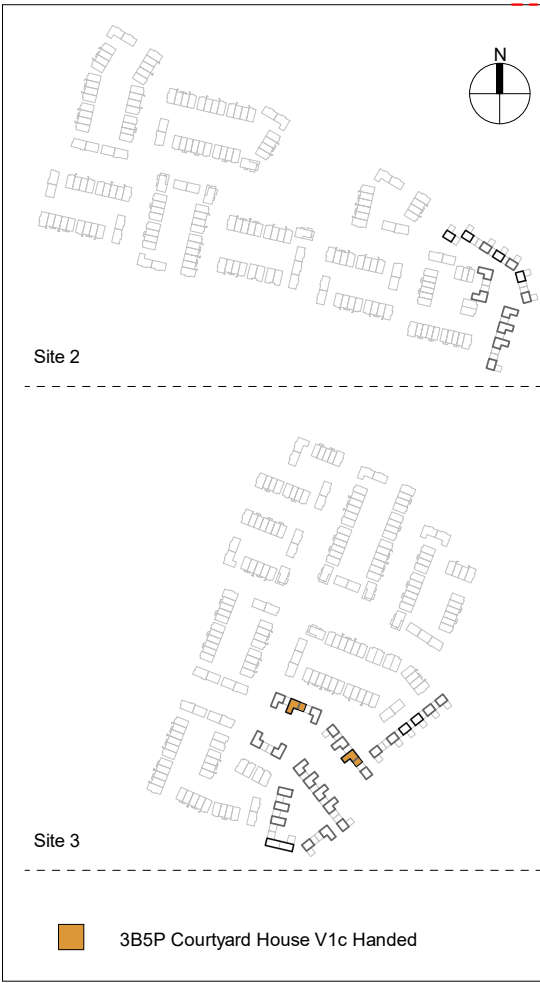
Courtyard House 3b5p\_Internal Rear Elevation\_V1c Handed

- general notes
1. This drawing is copyright Proctor and Matthews Architects and must not be copied in whole or part without prior consent.
  2. Do not scale from this drawing.
  3. Refer to drawing number.
  4. This drawing is to be read in conjunction with all other relevant architects and engineer's drawings.
  5. All dimensions to be checked on site prior to commencement of works and any discrepancies are to be checked with the architect immediately.
  6. Unless otherwise stated all dimensions are in mm.

Obs. 1: Garden wall heights are dependant on location within masterplan.  
Obs. 2: Elements of side elevations become party walls dependant on location within masterplan.  
Obs. 3: When terraces are back to back, refer to masterplan for pergola details.  
Obs. 4: Please refer to masterplan layout for individual pergolas and locations.

#### Material Key

Key	Material
01	Stretcher bond brickwork - charcoal
02	Rough textured render - white
03	Smooth textured render - white
04	Recessed entrance porches with white pre-cast concrete lining - white
05	Artificial slate or concrete equivalent roof tiles - blue/grey
06	Verge detail - blue/grey
07	Vertical louvered timber screens/posts to terrace
08	Square section powder coated rainwater goods - black
09	Vertical louvered timber screens/doors to carports
10	Composite/PVC windows and doors
11	Profiled fibre cement facade material and handrail - hessian
12	Profiled fibre cement facade material privacy screens with powder coated metal 'T' frame - hessian
13	Grey/white brick with grey mortar
14	Smooth textured render - dark grey
15	Grey/white brick with colour match mortar
16	Projecting header course grey/white brick grey mortar



/	08.12.21	For Planning	LG
rev	date	description	dw

client Glenveagh

project A496 Lands at Hollystown-Kilmartin

status S4 - Suitable for stage approval

drawing title 3 Bed 5 Person 2 Storey Courtyard House V1c Handed - Elevations

drawing no A496-PMA-XX-XX-DR-A-2024

project no - originator - volume - level - type - role - number
scale 1:100 date 12/06/21 drawn LG
original A2 revision / checked CM

Proctor & Matthews Architects

address 7 Blue Lion Place, 237 Long Lane, London SE1 4PU  
telephone +44 (0)20 7378 6695  
fax +44 (0)20 7378 1372  
email info@proctorandmatthews.com  
website www.proctorandmatthews.com